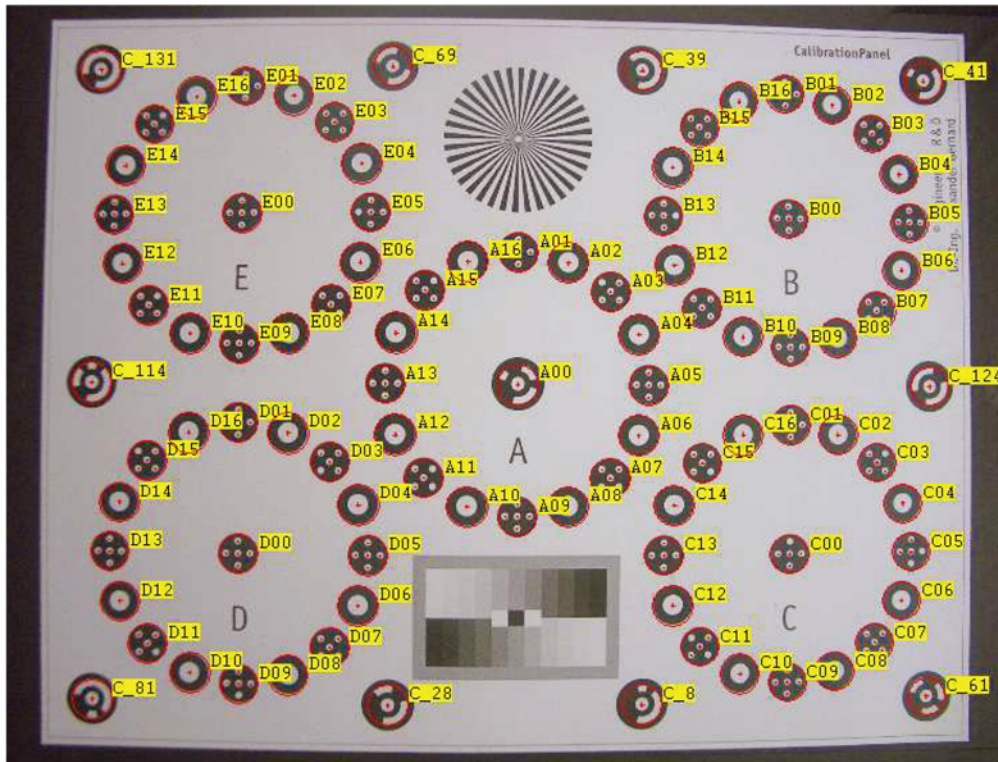


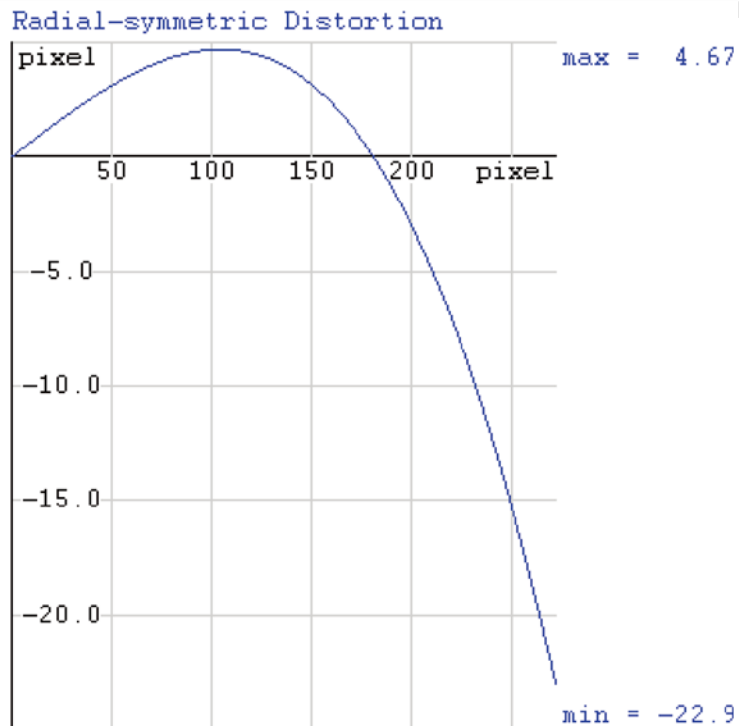
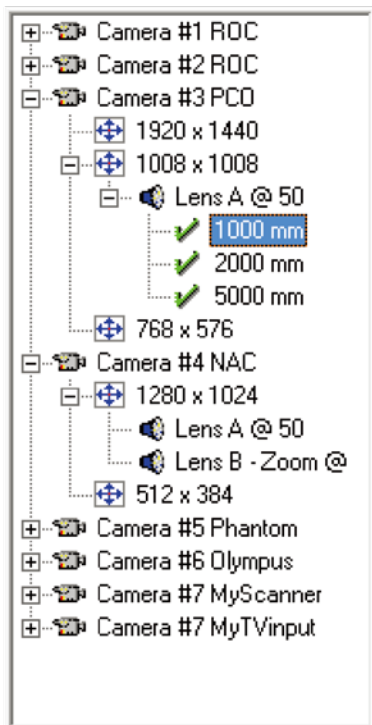
FalCon eXtra CamFolder

The Quality Assurance in Image Analysis: Camera Calibration and Distortion Measurements (ISO)



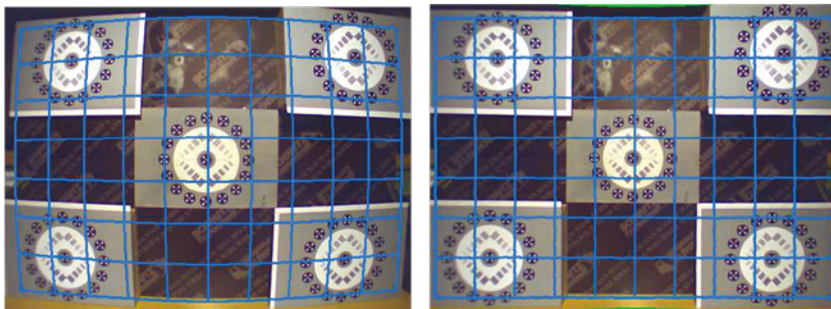
Main features:

- Calibrate cameras with a powerful range of distortion parameters
- Calculate the distortion index according to ISO 8721 / SAE-J211/2 Rev. Mar95
- View the results graphically
- Folder file with camera/lens combinations
- Access and view of camera data by tree view:
camera name – image format – lens name – calibration (focusing + date)
- 2D or 3D test field with pre-measured control points eg from AICON
- Support automatic setup by coded marker targets (AICON)
- Simultaneous calibration of camera pairs with identification of fixed relative camera positions
- Quality management: frequency of checks adjustable
- Clear tree structure
- Overview about all calibration revised: column wise list ASCII or Excel



Application:

- For calculation of measurement data by 2D/3D/6D-Image analysis
- Optical distortion correction



Technical Framework:

- Program system for computer platforms under WIN Server 2012/2016/2019/2022, WIN 8.1 / 10 / 11
- User interface compliant to MS-Windows.
- **Technical specifications are subject to change.**